



BORNEO® pre-equipped pillars

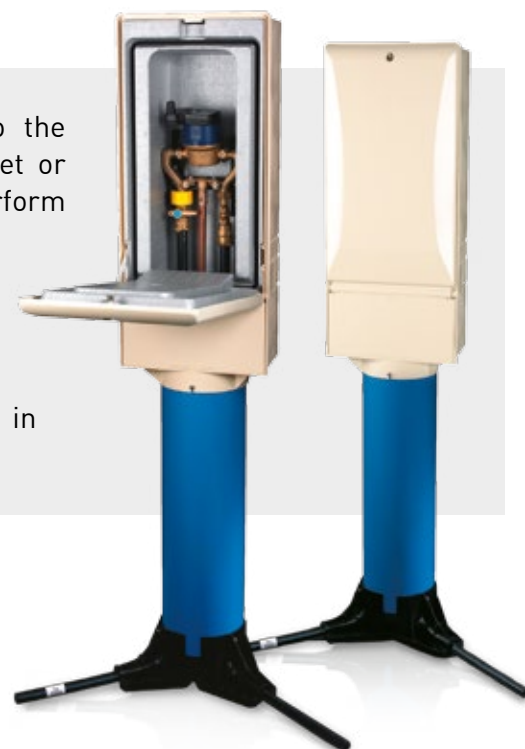
CONNECTION PILLARS

FOR DN15 - 110 MM IN-LINE METER

BORNEO® is a connection pillar for connecting customers to the drinking water network. Located on the property boundary (inset or surface-mounted), it makes it easier for network managers to perform meter-reading and other operations.

Its high-performance materials provide BORNEO® with excellent **insulation against freezing, and enable the integration of various hydraulic fittings.**

BORNEO® is in keeping with electricity connection enclosures in utility boxes in terms of **appearance and dimensions.**



Product advantages

- Product manufactured using fibreglass-reinforced polyester guaranteeing **good mechanical strength and effective resistance to adverse weather and climate extremes**
- Full set of hydraulic equipment (standard ¼-turn valve + EA-type check valve (NF) with captive drain plugs upstream and downstream)
- **Reinforced door pins**
- **Chamber volume** enables integration of various hydraulic fittings (lockable valve before meter, valve after meter) and remote meter-reading system



Technical characteristics

- Customisable door (please contact us)
- Adjustable feet (supplied with approx. 1.5 m PE) to facilitate installation and connection of polyethylene tubes
- Adjustable rail for optimum adjustment of hydraulics
- Door support stays (act as door stop when open)



Respect for the environment

Recycling of BORNEO® pillar at end of service life incorporated into product design:

- reduced number of components
- elements easy to separate
- reduced number of materials
- 100% recyclable insulation

The BORNEO® pillar has the design characteristics required of an eco-product.



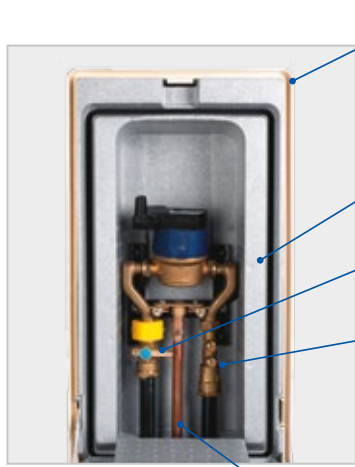
NEW



Equipped with PE100D polyethylene pipes resistant to disinfectants

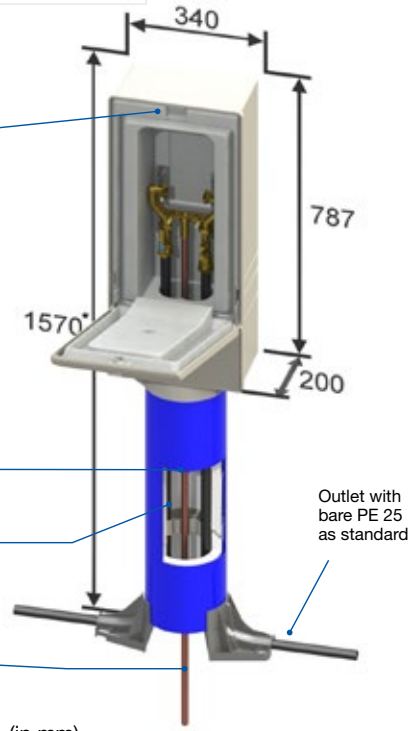


Can accommodate 1 DN15 meter



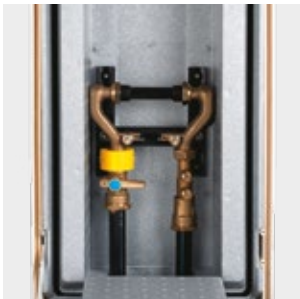
Connection pillar (meter not supplied)

- SMC envelope
- 1/4-turn closure (13 hex, slotted head)
- Expanded polystyrene insulation with protective film
- Lockable 1/4-turn valve
- Anti-pollution check valve with captive drain plugs upstream and downstream
- ø 25 mm PN20 (NF) PE tube
- Expanded polystyrene insulation around post
- Heat pipe

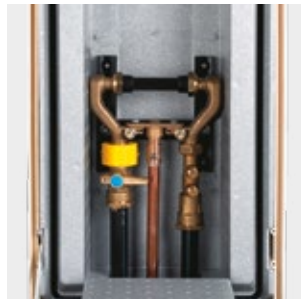


> HYDRAULIC FITTINGS

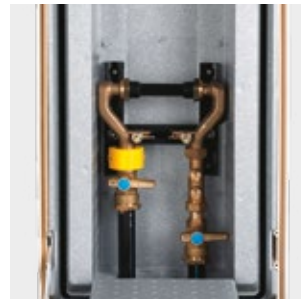
Example hydraulic fitting configurations with 1 DN15 - 110 mm meter



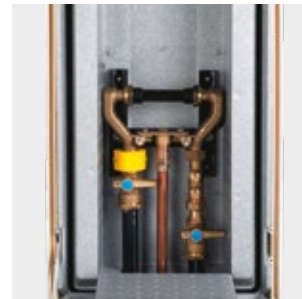
Lockable valve before meter
PE 25 - without heat pipe



Lockable valve before meter
PE 25 - with heat pipe



Lockable valve before meter + valve after meter
PE 25 - without heat pipe



Lockable valve before meter + valve after meter
PE 25 - with heat pipe

> ADJUSTABLE FEET

Positioning of adjustable feet and arrangement of polyethylene tubes



Adjustment from 90° to 270°

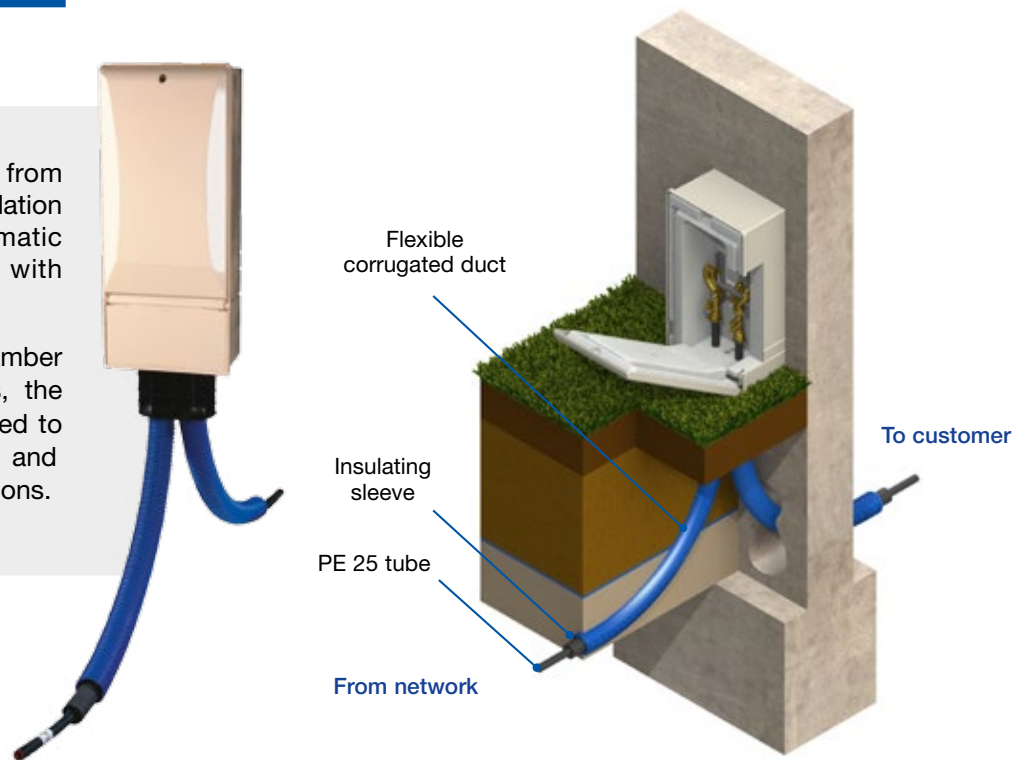


Example of connection at 135° with foot to improve stability

> RENOVATION BORNEO

The Renovation BORNEO from CAHORS facilitates the installation of challenging or problematic connections (e.g. wall with foundation).

Thanks to the structure of its chamber and the flexibility of its tubes, the renovation pillar is easily adapted to difficult routes, irregular ground and a range of inlet/outlet configurations.



> REFERENCES

		Version without heat pipe		Version with heat pipe measuring 1450 mm (250 mm overrun)		Packaging
		Lockable valve before meter	Lockable valve before meter + valve after meter	Lockable valve before meter	Lockable valve before meter + valve after meter	
BORNEO 600	PE 25	0294.035	-	-	-	10/ pallet
	Without PE	0294.036	-	-	-	
BORNEO 800	PE 25 (length 1.5 m)	0294.192	0294.193	0294.194	0294.195	
RENOVATION BORNEO	PE 25 (length 1.5 m)	0294.196	0294.197	Please contact us		

BORNEO® can accommodate various hydraulic fittings. Please contact our sales department regarding any specific requests.

BORNEO accessories	Reference
110 mm 3/4" by-pass plugs (5)	0990.889
110 mm 3/4" blanking plugs (5)	0990.890
Valve locking tool	0996.125
Insulated door	0996.141
Door pins (10)	0996.142
Door stays and rivets (10)	0996.143
Door insulation (with mounting)	0996.145
Base (+ fastenings)	0996.150
Insulated chamber (+ fastenings)	0996.149