



MODULO meter box

EQUIPPED MODULAR SOLUTION

Modulo is a range of rectangular meter boxes for in-line water meters.

The various configurations of the Modulo meter box allow it to be adapted to any environment. It offers a simple, comprehensive and high-performance solution for connecting customers to the drinking water network.



NEW

Equipped with PE100D polyethylene pipes resistant to disinfectants



Can accommodate DN15 or DN20 meter



Modular meter box

The **Modulo** range is available in several versions and can be adapted to the specific connections required and the climate conditions of the geographical zone:

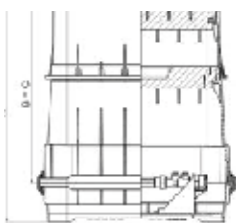
- **Single or double meter** (delivered with Ø 32 manifold for double meter), DN15 for 110 - 170 mm meter and PE Ø 25 connection
- **Several depth levels:** 300 - 1300 mm
- Customised assemblies can be supplied on request:
 - PE Ø 32 or PE Ø 40 connection
 - **Connection of DN20 meter**, length 190 mm
 - **Installation of valve after meter**
 - Lock on 0.5 t and 1.5 t covers

"Ready-to-connect" meter box

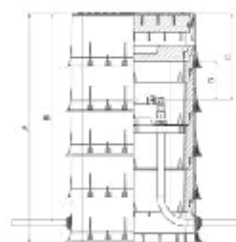
Modulo meter boxes are delivered fully equipped, offering a solution that can be installed directly in trench.

They include:

- **Insulated cover** able to withstand 0.5 t, 1.5 t or 12.5 t
- **Insulated chamber** without thermal bridge
- **Standard hydraulic components:** valve before meter, anti-pollution check valve, drain plugs, adjustable casing (depending on options). These components are fully accessible, allowing easier maintenance.
- **Curved PE Ø 25 pipes** (for offset version)
- **Polypropylene manifold** (for double meter versions), 1x Ø 32 inlet/2x Ø 25 outlets
- **Removable fall-protection grill**



Horizontal mount
Internal dimensions:
450x350 mm



Offset mount
Internal dimensions:
350 x 240 mm

Fixed height Modulo range	300	450	600	750	900	1050
Horizontal mount (in-line)	x	x				
Vertical mount (offset)			x	x	x	x
Overall dimensions (A)	400	550	650	800	950	1100
Water line depth (B)	300	450	580	730	880	1030
Max. meter centreline depth (C)	300	450	355	305	305	305
Available height above meter centreline (D)	240	240	170/195	115/140	115/140	115/140

Adjustable height Modulo range	400/550	500/650	700/850	850/1000	1000/1150	1150/1300
Horizontal mount (in-line)	x	x				
Vertical mount (offset)			x	x	x	x
Overall dimensions (A)	500 - 650	600 - 750	730 - 880	860 - 1010	1010 - 1160	1150 - 1300
Water line depth (B)	400 - 550	500 - 650	700 - 850	790 - 940	940 - 1090	1090 - 1240
Max. meter centreline depth (C)	400 - 550	500 - 650	385	520	520	520
Available height above meter centreline (D)	315	240	170/195	115/140	115/140	115/140

> MOUNTING OPTIONS

Modulo 450
Horizontal mount

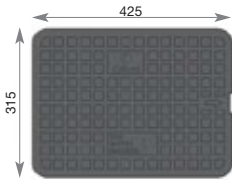


Modulo 750
Vertical mount

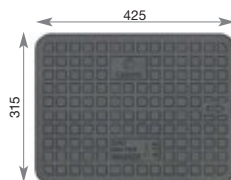


> COVERS

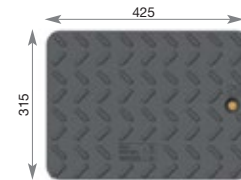
dimensions in mm



0.5 t load
Material: fibreglass-reinforced thermoplastic
with sill



1.5 t load
(class A15 as per NF EN 124)
Material: fibreglass-reinforced thermoplastic
with sill



12.5 t load
(class B125 as per NF EN 124)
Material: fibreglass-reinforced polyester
with bolt

> REFERENCES

Fixed height range

Height	300		450		600		750		900		1050	
Cover	0.5 T	A15	0.5 T	A15	0.5 T	A15	0.5 T	A15	0.5 T	A15	0.5 T	A15
Hydraulics												
Single meter 110 - 170 DN15 Ø 25 PE tubes	0258.033	0258.034	0258.035	0258.036	0258.037	0258.038	0258.003	0258.005	0258.006	0258.007	0258.008	0258.010
	24/pallet		18/pallet						8/pallet			
Double meter 110 - 170 DN15 Ø 32 PE manifold + Ø 25 PE tubes	0258.043	0258.044	0258.045	0258.046	0258.047	0258.049	0258.011	0258.012	0258.013	0258.014	0258.016	0258.019
	24/pallet		18/pallet		8/pallet				6/pallet			

Adjustable height range

Height	400-550	500-650	700-850	850-1000	1000-1150	1150-1300		
Cover	B125 with lock	B125 with lock	B125 with lock	B125 with lock	B125 with lock	B125 with lock		
Hydraulics								
Single meter 110 - 170 DN15 Ø 25 PE tubes	0258.039	0258.040	0258.042	0258.020 *	0258.022	0258.023		
	24/pallet		18/pallet		12/pallet		8/pallet	
Double meter 110 - 170 DN15 Ø 32 PE manifold + Ø 25 PE tubes	0258.050	0258.051	0258.052	0258.024	0258.025	0258.026		
	24/pallet		18/pallet		8/pallet		6/pallet	

*Empty Modulo, height 850 - 1000, 2 curved PE Ø 25 pipes Ref. 0258.214

Empty Modulo, height 850 - 1000, 2 curved PE Ø 32 pipes Ref. 0258.215

Accessories and spare parts

Insulated 0.5 t cover	0974.030	150 mm extension section with fastening kit	0974.009
A15 insulated cover	0996.022	SMC	0974.008
B125 insulated cover	0974.027	Bottom with end-pieces + mounting rails + screws	0974.007
Adjustable B125 frame	4087.501	Insulating cap	1022.607