

AQUAX meter box

COMPACT METER BOX FOR DN15/DN20 METERS

AQUAX is a range of compact meter boxes for **coaxial DN15 and DN20 meters** that enable customers to be connected to the drinking water network.



NEW

Equipped with PE100D polyethylene pipes resistant to disinfectants



Ready to connect:

- Hydraulics equipped with a cut-off function (1/4-turn or multi-turn), NF check valve, upstream and downstream captive drain plugs
- 3 connection solutions (bare PE, automatic synthetic connector or brass connector with mechanical clamping)

Freeze resistance:

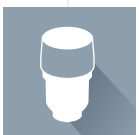
Fully insulated, can be equipped with heat pipe providing constant heat supply, improving freeze resistance performance

Recyclable:

All components recyclable and easy to separate

Perfect integration on site:

- 2 levels of load resistance for cover
- 3 depth levels. Vertical adjustment up to 20 cm and angle adjustment.



Coaxial meter integration:

Nominal flow rate up to 2.5 m³/h
G1-1/2 thread

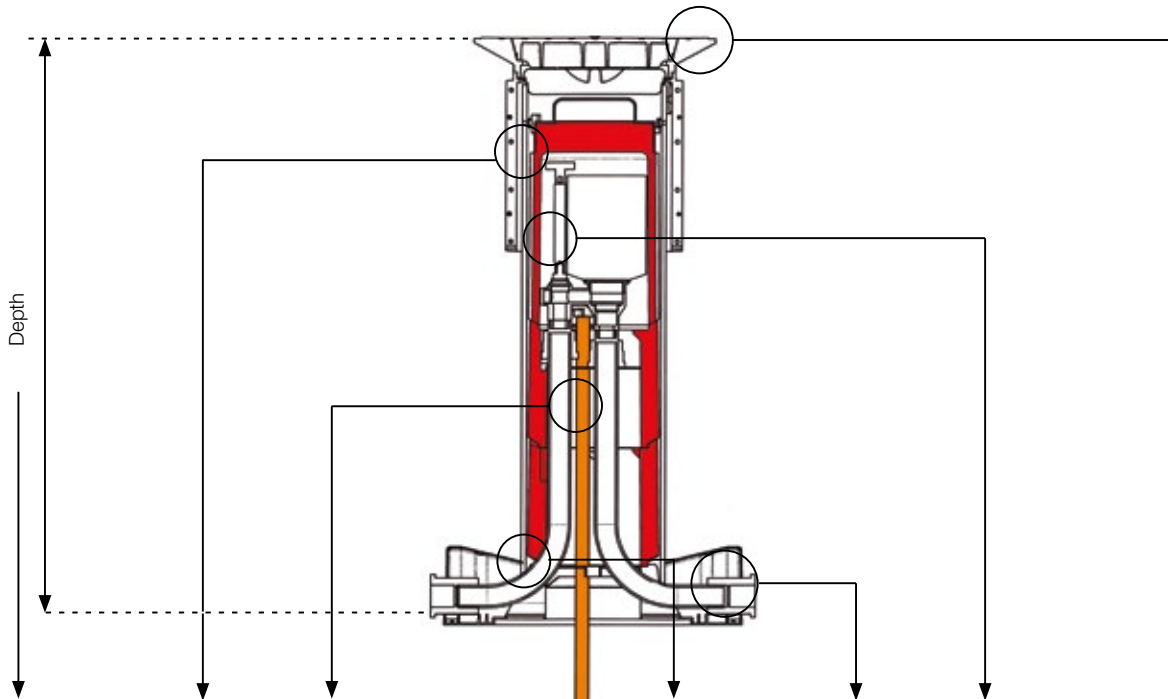


Standard cover
(3.5 t)



Reinforced cover
B125 (12.5 t)

> CREATE YOUR REFERENCE



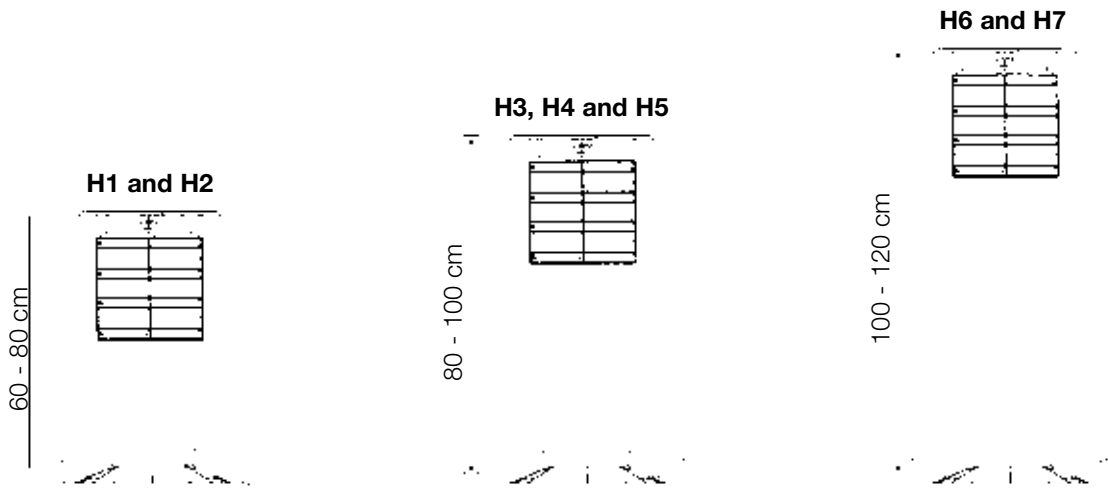
Depth and freeze resistance								Ø PE connection		PE I/O			Valve head		Cover resistance		
Depth	60 - 80 cm		80 - 100 cm			100 - 120 cm		25 mm	32 mm	Bare PE outlet	Brass connectors	Synthetic connectors	1/4-turn	Disc	Type	Reinforced (12.5 t) B125	Compact (3 t) A15
Insulation	Standard without heat pipe	Extra without heat pipe	Standard without heat pipe	Extra without heat pipe	Extra with heat pipe	Extra without heat pipe	Extra with heat pipe								Colour	Black	Black
Order code	H1	H2	H3	H4	H5	H6	H7	PE 25	PE 32	SN	SL	ST	R1	R2	T12N	T32N	
Order description	H 5							PE 25		S L			R 1		T 12N*		

*Reference example of 80-100 cm meter box with extra insulation and heat pipe, with 25 mm PE with brass connector outlet, 1/4-turn valve head and reinforced cover and frame (12.5 t).

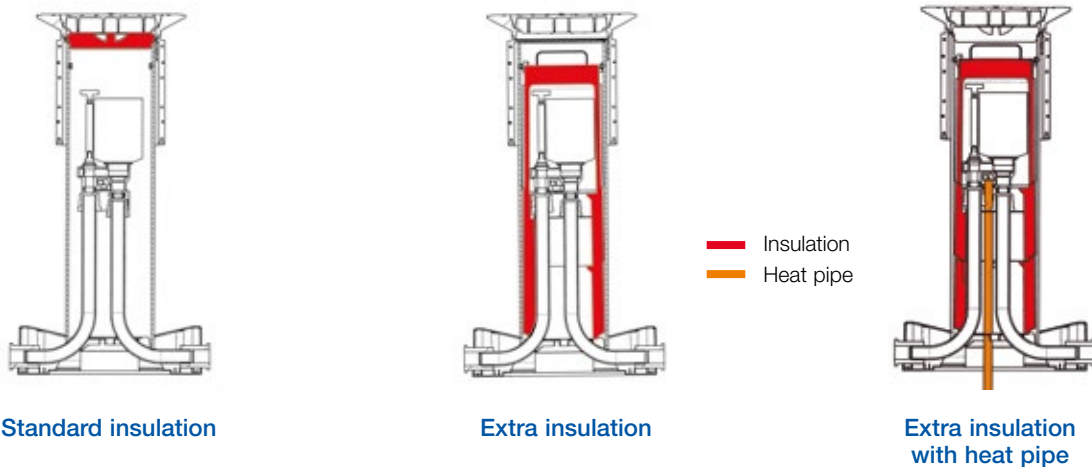
> ACCESSORIES

Descriptions	Ref.	Descriptions	Ref.
Brass blanking plug for base	0925.794	Check valve with support	0990.253
By-pass plug for base	0925.795	Drain plug (1 unit)	0990.256
1/4-turn valve head	0990.251	3.5 t cover (A15) with hinge	0990.867
Square disc valve head	0990.252	12.5 t cover (B125)	0990.870
Hydrant key for fluted 1/4-turn head	0990.254	3.5 t cover with lock and insulation	0990.282
Hydrant key for triangular disc head	0990.255	12.5 t cover with extension section	0990.281
Hydrant key for square disc head	0990.868	3.5 t cover with extension section	0990.280
1/4-turn head locking kit	0974.004	Replacement lock for 3.5 t cover	0990.283
Lock cylinder + key	0974.003	Standard insulation block	0990.271
Screw end-piece for lockable valve head	4.084.884	Extra insulating cap	0990.270
Disc valve disassembly tool	0990.257	Hinge + pin for hinged cover (pack of 10)	0990.875

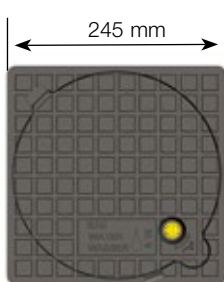
> DEPTH



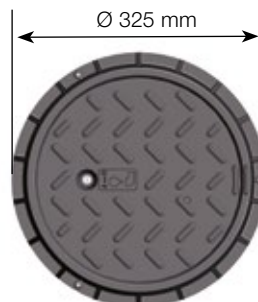
> INSULATION



> ADJUSTABLE AND TILTABLE COVER



Standard Load: 3.5 t
(class A15 as per standard NF EN 124) for areas used by pedestrians and cyclists only



Reinforced Load: 12.5 t
(class B125 as per standard NF EN 124) for pavements, pedestrian and comparable areas, car parks and multi-storey car parks

> PRODUCT PHOTOS



Meter box
Ref. H4 PE 32 ST R1 T32N



3.5 t compact cover

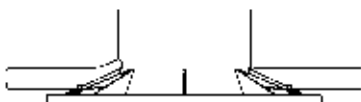


Connections
with quick synthetic connectors

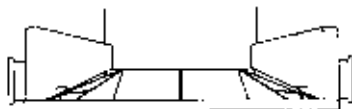


Hydraulics

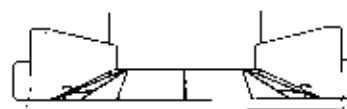
> PE CONNECTION



Bare PE connections



Brass connections
for mechanical clamping



Automatic synthetic
connectors