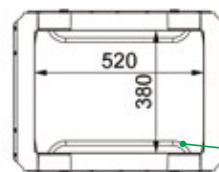
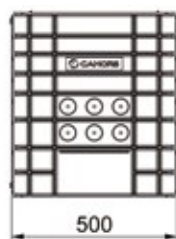
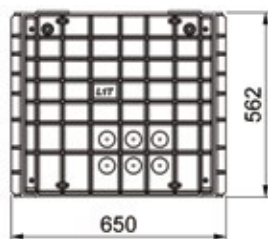


> DIMENSIONS (MM)

L1T

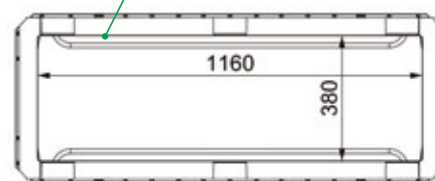
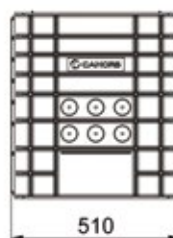
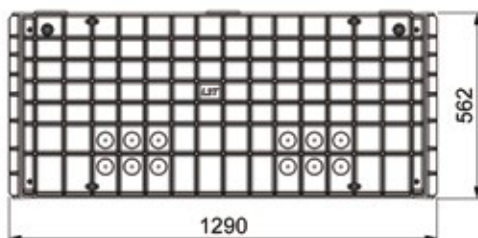
up to 40 T load capacity



Aluminium cable support

L2T

up to 25 T load capacity



| Reference | Description | Packaging | |
|-------------|---|---------------|-----------|
| 0802.101R13 | L1T underground cable draw-in box with base | Pre-assembled | 12/Pallet |
| 0802.100R13 | L1T underground cable draw-in box without base | Pre-assembled | 12/Pallet |
| 0802.107R13 | L2T underground cable draw-in box with base | Pre-assembled | 6/Pallet |
| 0802.106R13 | L2T underground cable draw-in box without base | Pre-assembled | 6/Pallet |
| 0980.034R13 | L1T underground cable draw-in box kit | Kit | 24/Pallet |
| 0980.041R13 | L1T underground cable draw-in box kit with base | Kit | 24/Pallet |
| 0980.042R13 | L2T underground cable draw-in box kit | Kit | 12/Pallet |
| 0980.043R13 | L2T underground cable draw-in box kit with base | Kit | 12/Pallet |

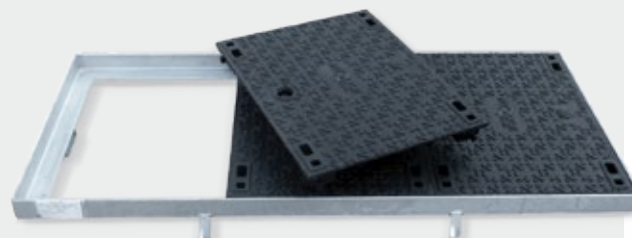


Covers and Frames

Closures made up of galvanised steel frames and ductile cast iron pads are designed for covering access chambers for dry networks.

- 2 ranges :**
- ECO range
 - SECURE range with lock secured traps

- Optional :**
- Custom marking
 - Special handling key and screw for protection against tampering
 - Protection grid



Benefits

- Complies with EN 124
- Resistant to B125, C250 or D400
- Format L1 / L2 / L3
- Corner frame (mechanically welded and heat galvanized)

