



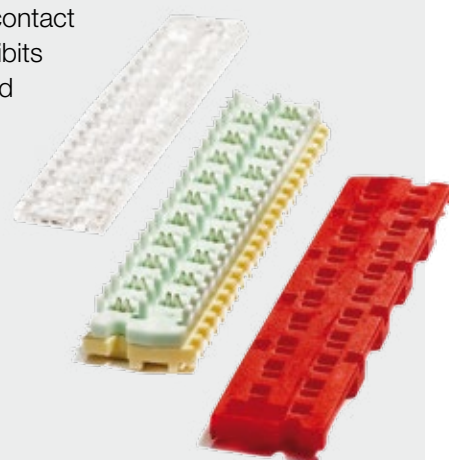
Modular splicing connectors

CAHORS offers a splicing system you can depend on for highly efficient, reliable yet highly economical connections. Of proven technology the modular connectors are used extensively around the world.

The connectors offer solder equivalent connections, delivering low contact resistance. Manufactured with superior materials, the connector exhibits excellent performance in adverse conditions. All the range of 10, 20 and 25 pair modular connectors feature Insulation Displacement Connection (IDC) made from a superior grade of phosphor bronze with tin over copper plating. The range of products are available with splicing rigs which offer simple set-up, systematic and accurate splicing. This results in great time saving and reliable connections.

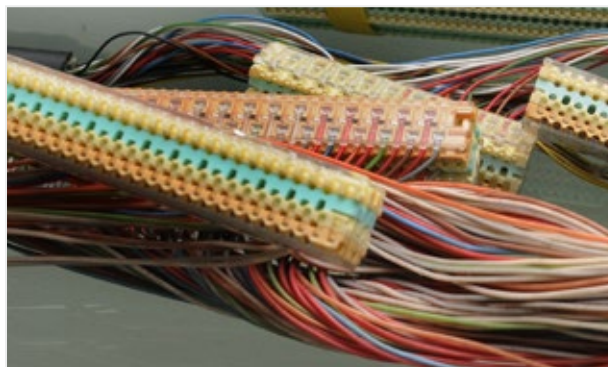
The modular connectors are available in :

- Straight splicing
- Half tap splicing
- Bridge splicing.



Product Description

Sealant boxes are available for straight splicing and pluggable/bridge connectors. When applied with the tool provided, the special sealant forces into the wire channels and completely floods the connector providing very effective protection against water or moisture.



Simple and economical modular solutions for all type of cable splicing requirements



Features

- Built in cut off blades trim excess wire while crimping. Stripping of the conductors are not required
- Testing of conductor pairs made easy with the aid of in-built test access port in the connector
- Full range of products for straight, tap and plugging applications
- Pre-filled modules for protection from humidity and condensation
- Spliced connectors, when applied with sealant box, offers excellent moisture and water resistance.



Benefits

- Multiple simultaneous connections
- Proven products in extreme weather conditions
- Connection quality guaranteed over time
- Quick cabling
- Economic product

> TOOLS



> Built sturdily the failsafe system features :


- Easy to follow instructions
- Increased accuracy and productivity
- Reduces fatigue of craftsmanship
- Different types of splicing job
- Associated accessories enabling testing, re-entry and repair work.

> The system consist of :

- Support tube assembly
- Splicing head assembly
- Hydraulic crimping tool
- Check comb
- Cover removal tool
- Insertion and cut-tool tool
- Pair test plug
- Hand crimping tool




> 25 PAIR MODULAR CONNECTOR

Product	Part No	Type	Description / Feature	Cover	Body	Base	Packing
Conductor diameter range 0.40 to 0.65 mm maximum insulation diameter 1.5 mm							
	25 SD-T	Straight Splicing	25 Pair Straight Splicing Modular Connector dry version, made of Polycarbonate. For pressurized joints and specific application.	Transparent	Yellow Gold	Transparent	Small box = 12 pcs - Carton box = 120 pcs (In multiples of 120 pcs)
	25 SF-T		25 Pair Straight Splicing Modular Connector pre-filled with sealant, made of Polycarbonate. Compliance to Telcordia (Bell Core) Technical Specification.	Transparent	Yellow Gold	Transparent	
	25 SSF-T		25 Pair Straight Splicing Modular Connector pre-filled with special non-sticky silicon based gel, made of Polycarbonate.	Transparent	Yellow Gold	Transparent	
	25 SX		25 Pair Straight Splicing Modular Connector dry version, made of Polycarbonate. Consisting of sealant box and applicator. For using buried, underground or aerial jointing where resistance to water and high humidity is critical.	Yellow	Yellow Gold	Gold	
	25 HD-T	Half Tap Splicing	25 Pair Half-Tap Splicing Modular Connector dry version, made of Polycarbonate. For pressurized joints and specific application. No cut-off blades are available in bottom side of connector. Note sealant box use is not possible with Half-Tap splicing modules.	Transparent	Yellow Green	Transparent	
	25 HFT		25 Pair Half-Tap Splicing Modular Connector pre-filled with sealant, made of Polycarbonate. Compliance to Telcordia (Bell Core) Technical Specification.	Transparent	Yellow Green	Transparent	
	25 HSF-T		25 Pair Half-Tap Splicing Modular Connector pre-filled with special non-sticky silicon based gel, made of Polycarbonate.	Transparent	Yellow Green	Transparent	
	25 PD-T	Bridge Splicing	25 Pair Pluggable Modular Connector dry version, made of Polycarbonate. For pressurized joints and specific application. The connector can be mated with the 25 SD or 25 PD-T for transfer or rearrangement.	Transparent	Yellow Blue	Transparent	
	25 PF-T		25 Pair Pluggable Modular Connector pre-filled with sealant, made of Polycarbonate. Compliance to Telcordia (Bell Core) Technical Specification.	Transparent	Yellow Blue	Transparent	
	25 PSF-T		25 Pair Pluggable Modular Connector pre-filled with special non-sticky silicon based gel, made of Polycarbonate.	Transparent	Yellow Blue	Transparent	

Unless and Otherwise stated conductor means Copper conductor.




The use of CAHORS approved crimping tool for installation is required to ensure rapid and reliable connection.

> 20 PAIR MODULAR CONNECTOR

Product	Part No	Type	Description / Feature	Cover	Body	Base	Packing
Conductor diameter range 0.40 to 0.65 mm maximum insulation diameter 1.5 mm							
	20 ST	Straight Splicing	20 Pair Straight splicing module. Made of Polycarbonate. Packing Kit consist of sealant box and applicator tool. For use in buried and underground jointing where resistance to water and high humidity is critical. Compliance to BSNL Modular connector specification.	Yellow	Yellow Gold	Gold	Small pack = 20 pcs Carton box = 500 pcs
	20 HT	Half Tap Splicing	20 Pair Half tap splicing module. For specific applications. Made of Polycarbonate. Compliance to BSNL Modular connector specification.	Green	Green Gold	Gold	

> 10 PAIR MODULAR CONNECTOR

Conductor diameter range 0.40 to 0.65 mm maximum insulation diameter 1.8 mm

	10 SD-T	Straight Splicing	10 Pair Straight Splicing Modular Connector dry version, made of Polycarbonate. For pressurized joints and specific application.	Transparent	Yellow Gold	Transparent	Small box = 20 pcs - Carton box = 500 pcs (In multiples of 500 pcs)
	10 SF-T		10 Pair Straight Splicing Modular Connector pre-filled with sealant, made of Polycarbonate. Compliance to Telcordia (Bell Core) Technical Specification.	Transparent	Yellow Gold	Transparent	
	10 SSF-T		10 Pair Straight Splicing Modular Connector pre-filled with special non-sticky silicon based gel, made of Polycarbonate.	Transparent	Yellow Gold	Transparent	
	10 SX		10 Pair Straight Splicing Modular Connector dry version, made of Polycarbonate. Consisting of sealant box and applicator. For using buried, underground or aerial jointing where resistance to water and high humidity is critical.	Transparent	Yellow Gold	Transparent	
	10 HD-T	Half Tap Splicing	10 Pair Half-Tap Splicing Modular Connector dry version, made of Polycarbonate. For pressurized joints and specific application.	Transparent	Yellow Green	Transparent	
	10 HF-T		10 Pair Half-Tap Splicing Modular Connector pre-filled with sealant, made of Polycarbonate. Compliance to Telcordia (Bell Core) Technical Specification.	Transparent	Yellow Green	Transparent	
	10 HSF-T		10 Pair Half-Tap Splicing Modular Connector pre-filled with special non-sticky silicon based gel, made of Polycarbonate.	Transparent	Yellow Green	Transparent	
	10 PD-T	Bridge Splicing	10 Pair Pluggable Modular Connector dry version, made of Polycarbonate. For pressurized joints and specific application.	Transparent	Yellow Blue	Transparent	
	10 PF-T		10 Pair Pluggable Modular Connector pre-filled with sealant, made of Polycarbonate. Compliance to Telcordia (Bell Core) Technical Specification.	Transparent	Yellow Blue	Transparent	
	10 PSF-T		10 Pair Pluggable Modular Connector pre-filled with special non-sticky silicon based gel, made of Polycarbonate.	Transparent	Yellow Blue	Transparent	

Unless and Otherwise stated conductor means Copper conductor.

The use of CAHORS approved crimping tool for installation is required to ensure rapid and reliable connection.

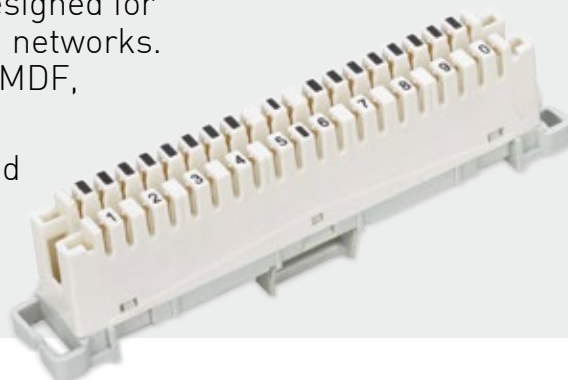


10 Pair Disconnection

TYPE IDC CONNECTOR

CAHORS 10 Pair Disconnection module is designed for telecommunication and data communication networks. Commonly this module is used in inside the MDF, Cabinets, DP boxes.

These modules are designed and built around proven Insulation Displacement Connection (IDC) technology, which holds the wires at a 45° angle.



Benefits

- Technically superior module
- Line testing is possible in both direction
- Robust long-term environmental stability allows both indoor and outdoor installation
- Individual pair disconnection is possible
- Four wire test access
- Fits on all LSA-PLUS back mount frames



Performance

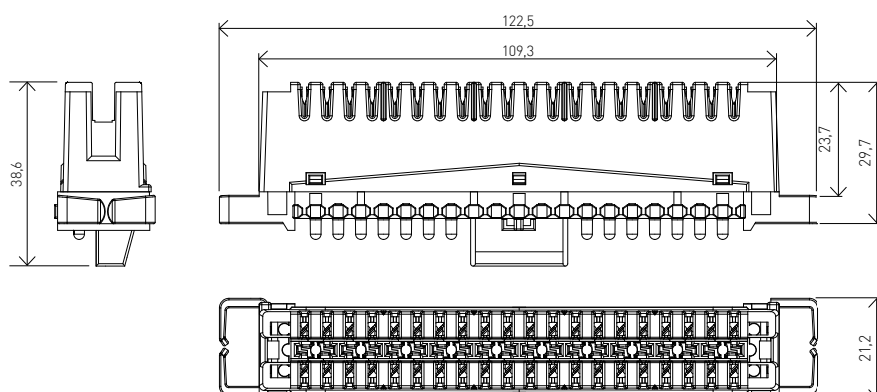
- Contact resistance < 3.0 mΩ
- Insulation resistance: $\geq 3 \times 10^4$ MΩ
- Voltage Proof: 2000 VAC for 60s
- IDC Life: ≥ 300
- Operating Temperature: -20°C to +80°C



Features

- IDC connector. No stripping of insulation for terminations.
- Re-termination accepting IDC.
- Disconnection type Circuit with two piece contacts. These contacts normally closed incorporating disconnection facility.
- Provides a continuous link between permanent wiring and jumper wiring, giving provision for monitoring access and over voltage protection.

> DIMENSIONS (MM)



> CT BLOCK 100 PAIRS EQUIPPED WITH



- 10 Nos of Connection or Disconnection type Modules
- Back Mount Frame
- Designation Module
- Nuts and Bolts for fixing the back mount
- Dust Cover (Transparent)

> ACCESSORIES



- Disconnection plug
- Connection Tool
- Four way test plug with 4 conductor cords
- Two way test plug with 2 conductor cords
- Marking Plugs

Subscriber Connection Modules

CAHORS offers multiple products for connecting subscribers.

Subscribers can be connected to multiple points on the telecommunications network:

- **External:**
in roadside cabinets, overhead cabinets or pillar cabinets
- **Internal:**
VDI (Voice/Data/Image) box, building distribution point

CAHORS therefore offers a connection module panel tailored to every need and to the practices in force in each country.



Benefits

- Module 1 subscriber with reusable protective gel
- Module 1 subscriber with a screw connection
- Implementation accessories