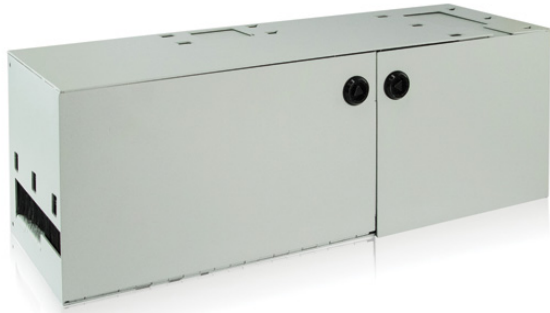


OPTICAL FIBRE BUILDING SHARING POINT



Subscriber connection solution for FTTH operators in collective buildings.

Main characteristics

CAHORS offers complete solutions for FTTH distribution in residential facilities.

The Building Sharing Point is a module which allows splicing, coupling and cross-connection of subscriber connections on entry to the building. Modules may be stacked to allow sharing between building operators and commercial operators. It allows connection between the cable entering from outside and the rising cable.

The Building Sharing Point is used in highly dense areas with a deployment of four OFs per home.

Advantages

- Compliant with the Fibre Objective guide
 - Optimised connections
 - Semi-terminated or 100% terminated connections
 - Coiling Building Sharing Point for waiting fibres
-

Uses

- Collective residential