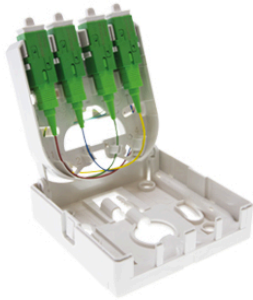


OPTICAL TERMINAL SOCKET AND OPTICAL TERMINATION DEVICE



FTTH optical fibre residential connection solution

Main characteristics

CAHORS offers complete solutions for FTTH distribution in residential facilities.

The Optical Terminal Socket is the termination point of the FTTH network at the subscriber's home where the operator's Optical Fibre Box or Optical Network Transceiver connects. These Optical Terminal Sockets are usually located in the communication board near the Dwelling Service Duct. The Optical Termination Device performs the same function, but its compact modular format makes it suitable for DIN rail mountings.

Advantages

- Wall or DIN rail mountings
 - Cable overlength management
 - Simplified cassette access
 - With or without a splicing cassette
-

Uses

- Collective residential
- Private residential
- Tertiary